

SOUTHERN INDIANA SENTINEL LANDSCAPE

INDIANA | Est. 2022



The Southern Indiana Sentinel Landscape is a collaborative partnership advancing the pace and scale of conservation and military mission support. The landscape’s efforts across 3.5 million acres in south-central Indiana are centered on Naval Weapons Station (NWS) Crane, the Lake Glendora Test Facility, Atterbury-Muscatatuck Training Center, and the Indiana Air Range Complex. NWS Crane is the third largest naval installation in the world by geographic area and specializes in acquisition engineering, electronic warfare, and special warfare weapons.

The designation of the Southern Indiana Sentinel Landscape in 2022 recognized the significance of these four military installations as well as the region’s rich natural and agricultural heritage. Surrounding these installations is a diverse and expansive landscape covered by 85% farms and forests. The landscape contains 470,000 acres of protected land including Department of Natural Resources properties, county parks, the Hoosier National Forest, national wildlife refuges, and land trust properties. These natural areas provide an essential buffer to support military training activities.

Coordinated by the Conservation Law Center at Indiana University’s Maurer School of Law, the partnership includes Federal agencies, state and local governments, and private organizations who work with private and public landowners. Together, partners advance sustainable land management practices for natural resource, agricultural, and military interests. Their conservation work prioritizes voluntary land protection by private landowners, recognizing their role in maintaining the landscape’s ecological and strategic value. Partnership initiatives to restore forests, protect working lands, and safeguard watersheds and riparian corridors are key to ensuring the installations can effectively conduct their missions.

Landscape Goals



Preserve and protect mission readiness, operations, and testing/training capabilities on all military lands and ranges.



Support sustainable farming and forestry practices to conserve rural working lands for environmental, ecological, and economic benefits.



Restore and sustain ecosystems by improving their function, ensuring a healthy environment, and sustaining clean water.



Address weather-related impacts through built infrastructure and nature-based solutions.



Promote collaboration to ensure thriving communities within the landscape.



Staff Sgt. Benjamin Dring, an EOD technician with the 355th CES/CED, researches a munition during the Air Force EOD final competition at Muscatatuck Urban Training Center, Indiana. (U.S. Air Force photo by Jason Wilkinson)

LANDSCAPE DETAIL

Total Sentinel Landscape Area: 3,546,233 acres

Total Protected Acres:
2,783

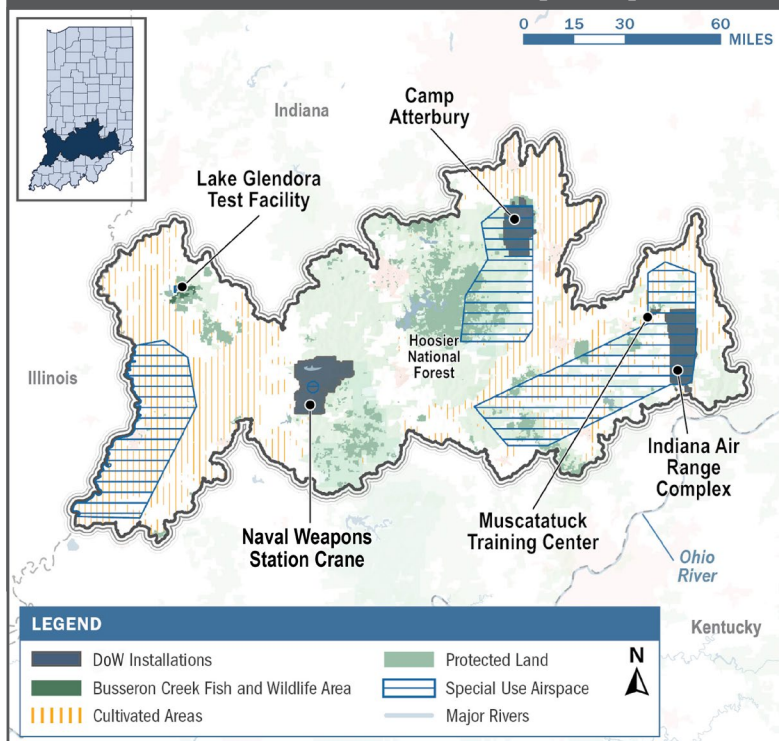
From year established through fiscal year 2024

Total Enrolled Acres:
40,710

For fiscal year 2024

Active Base Area Acres:
99,466

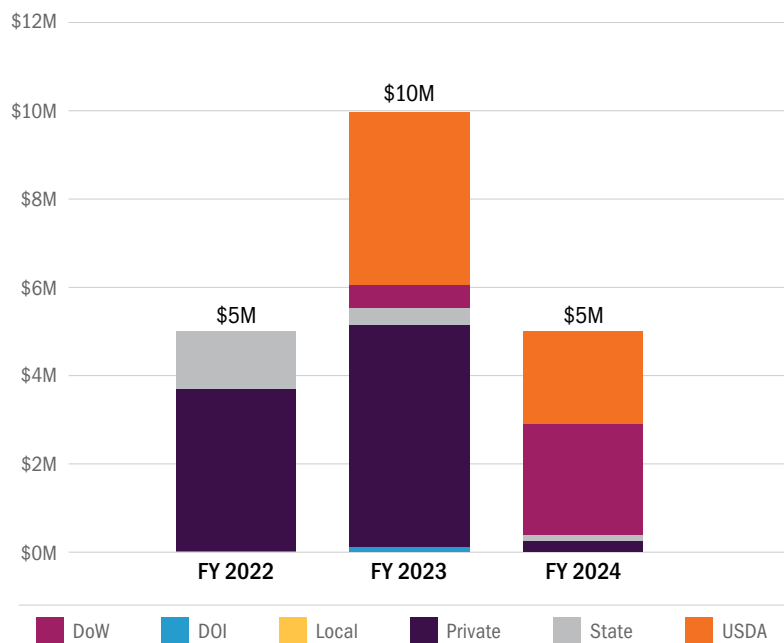
Southern Indiana Sentinel Landscape Map



Key Partners

- ▶ American Bird Conservancy
- ▶ Cardinal Land Conservancy
- ▶ Central Indiana Land Trust
- ▶ Conservation Cropping Systems Initiative
- ▶ Conservation Law Center
- ▶ Davey Resource Group Inc.
- ▶ Duke Energy
- ▶ Friends of Lake Monroe
- ▶ George Rogers Clark Land Trust
- ▶ Hardwood Ecosystem Experiment/Purdue
- ▶ Indiana Ag Nutrient Alliance
- ▶ Indiana Association of Soil and Water Conservation Districts
- ▶ Indiana Corn Marketing Council
- ▶ Indiana Department of Natural Resources
- ▶ Indiana Forestry and Woodland Owners Association
- ▶ Indiana Karst Conservancy
- ▶ Indiana National Guard
- ▶ Indiana Prescribed Fire Council
- ▶ Indiana Soybean Alliance
- ▶ Indiana State Department of Agriculture
- ▶ Indiana University Environmental Resilience Institute
- ▶ Indiana Wildlife Federation
- ▶ Knox County Soil and Water Conservation District
- ▶ Lake Monroe Water Fund
- ▶ Let the Sunshine In (LSSI)
- ▶ Monarch Joint Venture
- ▶ National Wild Turkey Federation
- ▶ Oak Heritage Conservancy
- ▶ Ouabache Land Conservancy
- ▶ Pheasants Forever
- ▶ Quail Forever
- ▶ Radius Indiana
- ▶ Regional Opportunities Initiative
- ▶ Sam Shine Foundation
- ▶ Sierra Club Hoosier Chapter Winding Waters Group
- ▶ State of Indiana Cooperative Invasives Management
- ▶ Sycamore Land Trust
- ▶ The American Farmland Trust
- ▶ The Nature Conservancy
- ▶ Uplands Science and Technology Foundation
- ▶ U.S. Department of Agriculture
- ▶ U.S. Department of War
- ▶ U.S. Department of Interior, Natural Resources Conservation Service
- ▶ U.S. Fish and Wildlife Service
- ▶ U.S. Forest Service – Hoosier National Forest
- ▶ U.S. Navy – Lake Glendora Test Facility
- ▶ U.S. Navy – Naval Weapons Station Crane
- ▶ White River Military Coordination Alliance
- ▶ Wild Pansy Farm

Southern Indiana Sentinel Landscape Total Funding by Partner



LANDSCAPE COORDINATOR CONTACT: Michael Spalding | mospalding@sentrinellandscapes.org